

**SPECIAL REPORT**

October 4, 2008

**MIDDLETOWN CITY SCHOOL DISTRICT**

**CLASSROOM SPACE, ENROLLMENT PROJECTIONS**

BASED ON TEN YEAR (AND THREE YEAR) AVERAGE  
(UPDATED THROUGH 2008 ENROLLMENT AND 2007 LIVE BIRTHS)

**REVISED K-2, 3-5, AND 6-12 CLASS SIZE**



**Mr. Mike Neumeister**  
4211 N. Buffalo Road, Suite 19  
Orchard Park, NY 14127  
PH 716-662-3910  
Fax 716-662-6684  
[mneumeister@capmark.org](mailto:mneumeister@capmark.org)

**Mr. Roy McMaster, CIPFA**  
265 Lew Storch Road  
Elmira, NY 14903-9345  
Ph 607-734-4308  
Cell 607-738-8444  
Fax 607-734-4309  
[rmcmaster@starband.net](mailto:rmcmaster@starband.net)

**Mr. Richard Tortora, Esq.**  
One Great Neck Plaza, Suite 1  
Great Neck, NY 11021  
PH 516-487-9815  
Fax 516-487-2575  
[rtortora@capmark.org](mailto:rtortora@capmark.org)

**Middletown City School District**  
**ENROLLMENT PROJECTIONS**

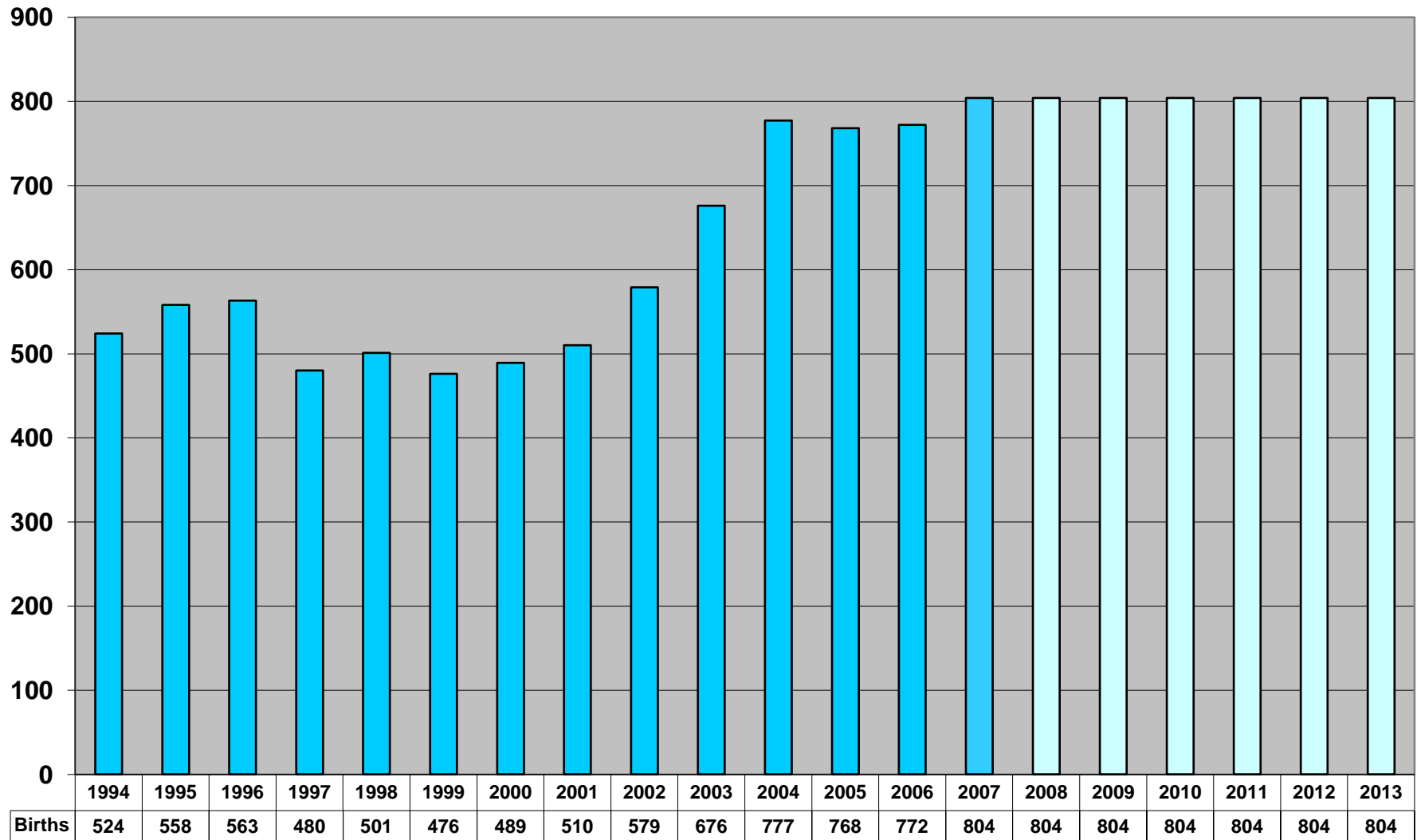
**ASSUMPTIONS:**

- 1 These projections are based upon a mathematical model with assumptions about the past changes in enrollment and how that history is projected into the future.
- 2 The *Cohort Survival* concept looks at what portion of a given grade level survive to become the next higher grade the following year. Values above 100% mean more continued to the next level and values less than 100 % mean fewer made it.
- 3 Averaging together years of history gives a multiplier that may be applied to the current year actual to project future years. This report uses two different averaging periods, 10-years and 3-years. They are based on the actual enrollments and should have a relatively higher confidence level.
- 4 Kindergarten enrollment is more difficult. The standard model uses a pool of live births to see what percentage actually make it into Kindergarten five years later. Normally this is the County, but Middletown has a more closely aligned set of statistics available from the New York State Department of Health which is used in this report.
- 5 Traditionally the average of the % of the live birth pool making it to kindergarten would be used to project the future kindergarten enrollment. That assumption was used for projections made in October 2007. That data was tested against the ACTUAL October 2008 enrollments to verify the assumptions made. The Live Birth data did not follow the model.
- 6 Middletown has a unique growing population mix with a continually GROWING live birth rate. The portion of the birth rate surviving to kindergarten five years later has shown a DECREASE each year from 2005-06 with 101.64% out of 489 births down to 2008-09 with 81.51% out of 676 births. The averages for the last 10-years were 90.43% and for the last 3-years were 89.06%.
- 7 The October 2008 Enrollment Projection revision used the actual 2008-09 rate of 81.51% to project the future Kindergarten Enrollments in both the 10-year and 3-year models. Confidence in projecting a continually growing birth rate with a continually diminishing 5-year later kindergarten enrollment using the historical average is low. A continually declining portion surviving to kindergarten 5-years later also does not seem reasonable, consequently the current portion is used for the future projections.

Middletown City School District  
ENROLLMENT PROJECTIONS

**MIDDLETOWN LIVE BIRTHS (Mother's Address)**

(NYS Department of Health, pmh03@health.state.ny.us)



**Middletown City School District  
ENROLLMENT PROJECTIONS**

**TESTING OCT-2007 PROJECTIONS TO ACTUAL OCT-2008**

	10-Year Average Model			3-Year Average Model		
	Projected Oct-07	Actual Oct-08		Projected Oct-07	Actual Oct-08	
	2008-09	2008-09		2008-09	2008-09	
Birth Yr.	2003	2003		2003	2003	
<i>Orange County</i>	<b>5,133</b>	<b>5,133</b>		<b>5,133</b>	<b>5,133</b>	
Middletown Mother's Address on Birth Cert.	<b>676</b>	<b>676</b>		<b>676</b>	<b>676</b>	
<b>K</b>	<b>611</b>	<b>551</b>	<b>(60)</b>	<b>647</b>	<b>551</b>	<b>(96)</b>
Birth +5 yrs % K	90.35	81.51	-8.84	95.77	81.51	-14.26
<b>1</b>	<b>547</b> 106.60	<b>525</b> 102.34	<b>-22</b> -4.26	<b>523</b> 105.69	<b>525</b> 102.34	<b>2</b> -3.35
<b>2</b>	<b>560</b> 104.47	<b>536</b> 100.00	<b>-24</b> -4.47	<b>515</b> 104.64	<b>536</b> 100.00	<b>21</b> -4.64
<b>3</b>	<b>489</b> 95.87	<b>490</b> 96.08	<b>1</b> 0.21	<b>512</b> 95.63	<b>490</b> 96.08	<b>(22)</b> 0.45
<b>4</b>	<b>482</b> 98.74	<b>478</b> 97.95	<b>(4)</b> -0.79	<b>479</b> 99.56	<b>478</b> 97.95	<b>(1)</b> -1.61
<b>5</b>	<b>479</b> 98.91	<b>486</b> 100.41	<b>7</b> 1.51	<b>513</b> 99.93	<b>486</b> 100.41	<b>(27)</b> 0.48
<b>6</b>	<b>532</b> 104.59	<b>539</b> 105.89	<b>7</b> 1.30	<b>528</b> 102.49	<b>539</b> 105.89	<b>11</b> 3.41
<b>7</b>	<b>530</b> 100.31	<b>524</b> 99.24	<b>-6</b> -1.07	<b>492</b> 101.07	<b>524</b> 99.24	<b>32</b> -1.83
<b>8</b>	<b>499</b> 100.58	<b>487</b> 98.19	<b>(12)</b> -2.40	<b>503</b> 100.25	<b>487</b> 98.19	<b>(16)</b> -2.07
<b>9</b>	<b>599</b> 116.96	<b>623</b> 121.68	<b>24</b> 4.72	<b>619</b> 116.79	<b>623</b> 121.68	<b>4</b> 4.89
<b>10</b>	<b>605</b> 90.29	<b>537</b> 80.15	<b>(68)</b> -10.14	<b>613</b> 94.01	<b>537</b> 80.15	<b>(76)</b> -13.86
<b>11</b>	<b>448</b> 85.96	<b>458</b> 87.91	<b>10</b> 1.95	<b>495</b> 86.62	<b>458</b> 87.91	<b>(37)</b> 1.29
<b>12</b>	<b>452</b> 92.89	<b>425</b> 87.27	<b>(27)</b> -5.62	<b>434</b> 90.50	<b>425</b> 87.27	<b>(9)</b> -3.23
<b>K-2</b>	<b>1,718</b>	<b>1,612</b>	<b>(106)</b>	<b>1,685</b>	<b>1,612</b>	<b>(73)</b>
<b>3-5</b>	<b>1,450</b>	<b>1,454</b>	<b>4</b>	<b>1,504</b>	<b>1,454</b>	<b>(50)</b>
<b>K-5 Total</b>	<b>3,168</b>	<b>3,066</b>	<b>(102)</b>	<b>3,189</b>	<b>3,066</b>	<b>(123)</b>
<b>6-8</b>	<b>1,561</b>	<b>1,550</b>	<b>(11)</b>	<b>1,523</b>	<b>1,550</b>	<b>27</b>
<b>9-12</b>	<b>2,104</b>	<b>2,043</b>	<b>(61)</b>	<b>2,161</b>	<b>2,043</b>	<b>(118)</b>
<b>TOTAL</b>	<b>6,833</b>	<b>6,659</b>	<b>(174)</b>	<b>6,873</b>	<b>6,659</b>	<b>(214)</b>

# ENROLLMENTS AND PROJECTIONS

(Projections based on Middletown Births and 10-year AVERAGE Cohort survival)

BEDS FALL ENROLLMENT FORM, Page 1											PROJECTED ENROLLMENTS										
											10 Yr. Avr. = 90.43										
	1	2	3	4	5	6	7	8	9	10	1	2	3	4	5	6	7	8	9	10	
Birth Yr.	1999-00	2000-01	2001-02	2002-03	2003-04	2004-05	2005-06	2006-07	2007-08	2008-09	2009-10	2010-11	2011-12	2012-13	2013-14	2014-15	2015-16	2016-17	2017-18	2018-19	
Orange County	5,030	4,914	4,893	4,869	4,766	4,850	4,913	4,936	5,040	5,133	5,206	5,165	5,444	5,338	5,338	5,338	5,338	5,338	5,338	5,338	
Middletown Mother's Address on Birth Cert.	524	558	563	480	501	476	489	510	579	676	777	768	772	804	804	804	804	804	804	804	
<b>K</b>	551	433	442	422	439	470	497	495	513	551	633	626	629	655	655	655	655	655	655	655	
Birth +5 yrs % K	105.15	77.60	78.51	87.92	87.62	98.74	101.64	97.06	88.60	81.51	81.51	81.51	81.51	81.51	81.51	81.51	81.51	81.51	81.51	81.51	
<b>1</b>	510	497	507	507	473	487	516	492	536	525	590	678	671	674	702	702	702	702	702	702	
	107.14	90.20	117.09	114.71	112.09	110.93	109.79	98.99	108.28	102.34	107.16	107.16	107.16	107.16	107.16	107.16	107.16	107.16	107.16	107.16	
<b>2</b>	542	554	521	502	535	501	519	535	510	536	548	616	708	701	704	733	733	733	733	733	
	106.27	108.63	104.83	99.01	105.52	105.92	106.57	103.68	103.66	100.00	104.41	104.41	104.41	104.41	104.41	104.41	104.41	104.41	104.41	104.41	
<b>3</b>	501	514	511	498	493	517	516	481	488	490	512	524	589	677	670	673	701	701	701	701	
	95.61	94.83	92.24	95.59	98.21	96.64	102.99	92.68	91.21	96.08	95.61	95.61	95.61	95.61	95.61	95.61	95.61	95.61	95.61	95.61	
<b>4</b>	512	526	501	492	464	491	510	513	484	478	483	505	517	581	668	661	664	691	691	691	
	98.08	104.99	97.47	96.28	93.17	99.59	98.65	99.42	100.62	97.95	98.62	98.62	98.62	98.62	98.62	98.62	98.62	98.62	98.62	98.62	
<b>5</b>	500	520	509	498	449	486	489	515	509	486	472	477	498	510	573	659	652	655	682	682	
	92.76	101.56	96.77	99.40	91.26	104.74	99.59	100.98	99.22	100.41	98.67	98.67	98.67	98.67	98.67	98.67	98.67	98.67	98.67	98.67	
<b>6</b>	485	526	537	556	532	512	512	487	528	539	512	497	502	524	537	603	694	686	689	718	
	100.62	105.20	103.27	109.23	106.83	114.03	105.35	99.59	102.52	105.89	105.25	105.25	105.25	105.25	105.25	105.25	105.25	105.25	105.25	105.25	
<b>7</b>	432	464	532	520	540	561	529	502	496	524	540	513	498	503	525	538	604	695	687	690	
	102.37	95.67	101.14	96.83	97.12	105.45	103.32	98.05	101.85	99.24	100.10	100.10	100.10	100.10	100.10	100.10	100.10	100.10	100.10	100.10	
<b>8</b>	482	428	467	543	523	530	553	530	512	487	525	541	514	499	504	526	539	605	696	688	
	102.34	99.07	100.65	102.07	100.58	98.15	98.57	100.19	101.99	98.19	100.18	100.18	100.18	100.18	100.18	100.18	100.18	100.18	100.18	100.18	
<b>9</b>	521	545	524	546	657	600	562	652	670	623	572	616	635	604	586	592	618	633	710	817	
	114.00	113.07	122.43	116.92	120.99	114.72	106.04	117.90	126.42	121.68	117.42	117.42	117.42	117.42	117.42	117.42	117.42	117.42	117.42	117.42	
<b>10</b>	496	496	470	426	436	599	602	572	521	537	559	513	552	569	542	525	531	554	568	637	
	100.81	95.20	86.24	81.30	79.85	91.17	100.33	101.78	79.91	80.15	89.67	89.67	89.67	89.67	89.67	89.67	89.67	89.67	89.67	89.67	
<b>11</b>	378	370	397	424	363	413	570	479	487	458	464	484	444	477	492	469	454	459	479	491	
	92.42	74.60	80.04	90.21	85.21	94.72	95.16	79.57	85.14	87.91	86.50	86.50	86.50	86.50	86.50	86.50	86.50	86.50	86.50	86.50	
<b>12</b>	365	338	372	349	364	356	445	461	397	425	424	430	449	411	442	456	435	421	425	444	
	106.10	89.42	100.54	87.91	85.85	98.07	107.75	80.88	82.88	87.27	92.67	92.67	92.67	92.67	92.67	92.67	92.67	92.67	92.67	92.67	
<b>K-2</b>	1,603	1,484	1,470	1,431	1,447	1,458	1,532	1,522	1,559	1,612	1,771	1,920	2,008	2,030	2,061	2,090	2,090	2,090	2,090	2,090	
<b>3-5</b>	1,513	1,560	1,521	1,488	1,406	1,494	1,515	1,509	1,481	1,454	1,467	1,506	1,604	1,768	1,911	1,993	2,017	2,047	2,074	2,074	
<b>K-5 Total</b>	3,116	3,044	2,991	2,919	2,853	2,952	3,047	3,031	3,040	3,066	3,238	3,426	3,612	3,798	3,972	4,083	4,107	4,137	4,164	4,164	
<b>6-8</b>	1,399	1,418	1,536	1,619	1,595	1,603	1,594	1,519	1,536	1,550	1,577	1,551	1,514	1,526	1,566	1,667	1,837	1,986	2,072	2,096	
<b>9-12</b>	1,760	1,749	1,763	1,745	1,820	1,968	2,179	2,164	2,075	2,043	2,019	2,043	2,080	2,061	2,062	2,042	2,038	2,067	2,182	2,389	
<b>TOTAL</b>	6,275	6,211	6,290	6,283	6,268	6,523	6,820	6,714	6,651	6,659	6,834	7,020	7,206	7,385	7,600	7,792	7,982	8,190	8,418	8,649	
Change From Prior Yr.	312	(64)	79	(7)	(15)	255	297	(106)	(63)	8	175	186	186	179	215	192	190	208	228	231	
TOTAL	6,275	6,211	6,290	6,283	6,268	6,523	6,820	6,714	6,651	6,659	6,834	7,020	7,206	7,385	7,600	7,792	7,982	8,190	8,418	8,649	

NOTES: Birth Statistics by County: [http://www.health.state.ny.us/nysdoh/vital\\_statistics/2000/table07.htm](http://www.health.state.ny.us/nysdoh/vital_statistics/2000/table07.htm)

Dark RED projections are based on actual live births.

Note #1 - 2007 data indicate a sustained high birth level.

# PROJECTED CLASS SIZE ROOMS NEEDED

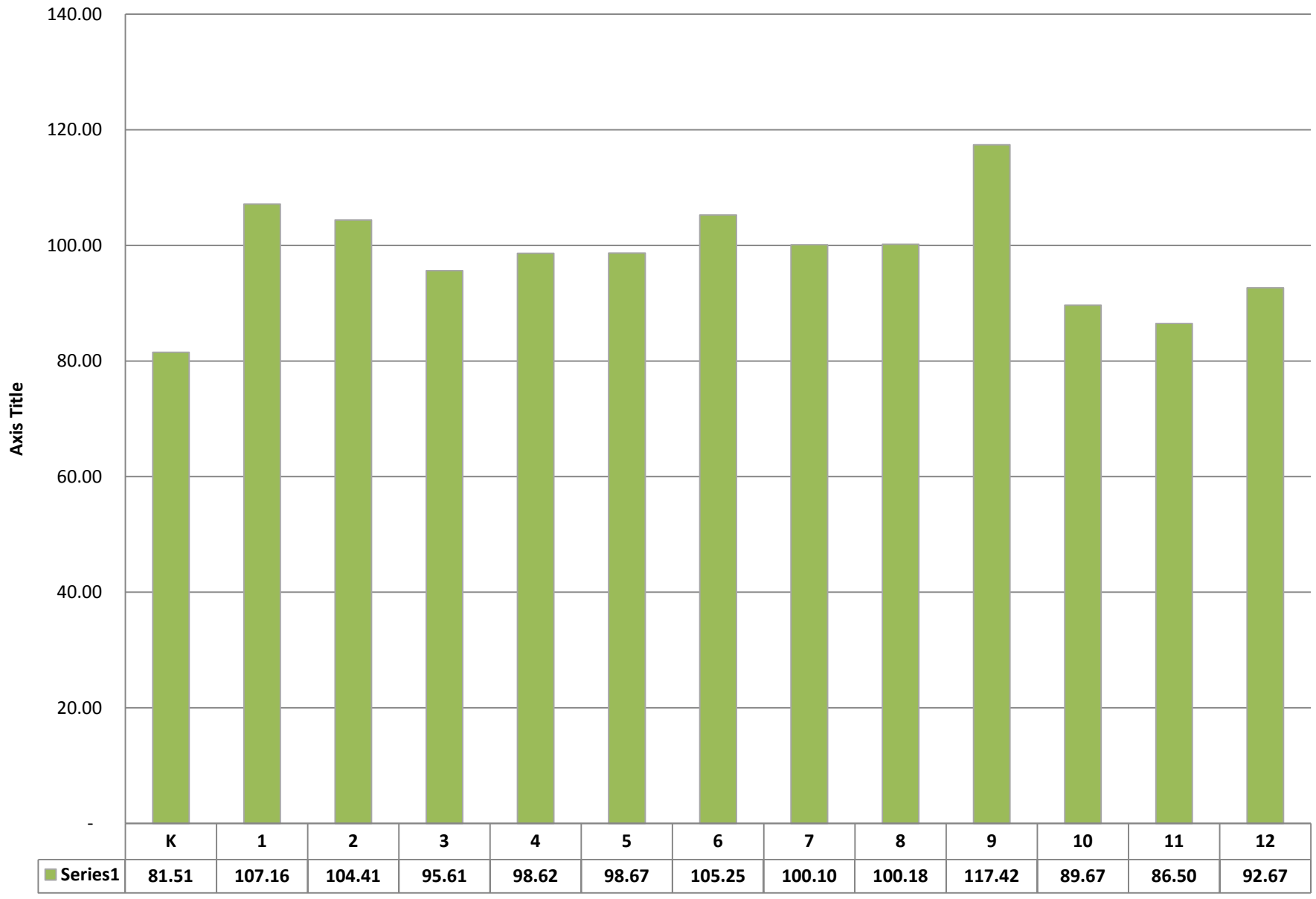
ANNUAL CHANGE IN ACTUAL ENROLLMENTS											PROJECTED CHANGE IN ENROLLMENTS									
	2	3	4	5	6	7	8	9	10	11	10 Yr. Avr.	2	3	4	5	6	7	8	9	10
	1999-00	2000-01	2001-02	2002-03	2003-04	2004-05	2005-06	2006-07	2007-08	2008-09	2009-10	2010-11	2011-12	2012-13	2013-14	2014-15	2015-16	2016-17	2017-18	2018-19
<b>K-2 Pupil Change</b>	93	(119)	(14)	(39)	16	11	74	(10)	37	53	159	149	88	22	31	29	-	-	-	-
<b>18 Per Room</b>	6	(7)	(1)	(3)	1	1	5	(1)	3	3	9	9	5	2	2	2	-	-	-	-
<b>3-5 Pupil Change</b>	(30)	47	(39)	(33)	(82)	88	21	(6)	(28)	(27)	13	39	98	164	143	82	24	30	27	-
<b>25 Per Room</b>	(2)	2	(2)	(2)	(4)	4	1	(1)	(2)	(2)	1	2	4	7	6	4	1	2	2	-
<b>K-5 Pupil Change</b>	63	(72)	(53)	(72)	(66)	99	95	(16)	9	26	172	188	186	186	174	111	24	30	27	-
<b>K-5 Rooms</b>	4	(5)	(3)	(5)	(3)	5	6	(2)	1	1	10	11	9	9	8	6	1	2	2	-
<b>6-8 Pupil Change</b>	49	19	118	83	(24)	8	(9)	(75)	17	14	27	(26)	(37)	12	40	101	170	149	86	24
<b>25 Per Room</b>	2	1	5	4	(1)	1	(1)	(3)	1	1	2	(2)	(2)	1	2	5	7	6	4	1
<b>9-12 Pupil Change</b>	200	(11)	14	(18)	75	148	211	(15)	(89)	(32)	(24)	24	37	(19)	1	(20)	(4)	29	115	207
<b>25 Per Room</b>	8	(1)	1	(1)	3	6	9	(1)	(4)	(2)	(1)	1	2	(1)	1	(1)	(1)	2	5	9
<b>Combined Change</b>	312	(64)	79	(7)	(15)	255	297	(106)	(63)	8	175	186	186	179	215	192	190	208	228	231
<b>Total Rooms</b>	14	(5)	3	(2)	(1)	12	14	(6)	(2)	-	11	10	9	9	11	10	7	10	11	10

↑

2008 September Enrollments						
MHS	TTMS	MMS	Maple Hill	Chorley	T. Moon	Mech
623			325			211
537	252	287	298			192
458	254	270	295	332	219	183
425	246	241	282	307	218	204
<b>2,043</b>	<b>752</b>	<b>798</b>	<b>1,200</b>	<b>639</b>	<b>437</b>	<b>790</b>
						<b>6,659</b>

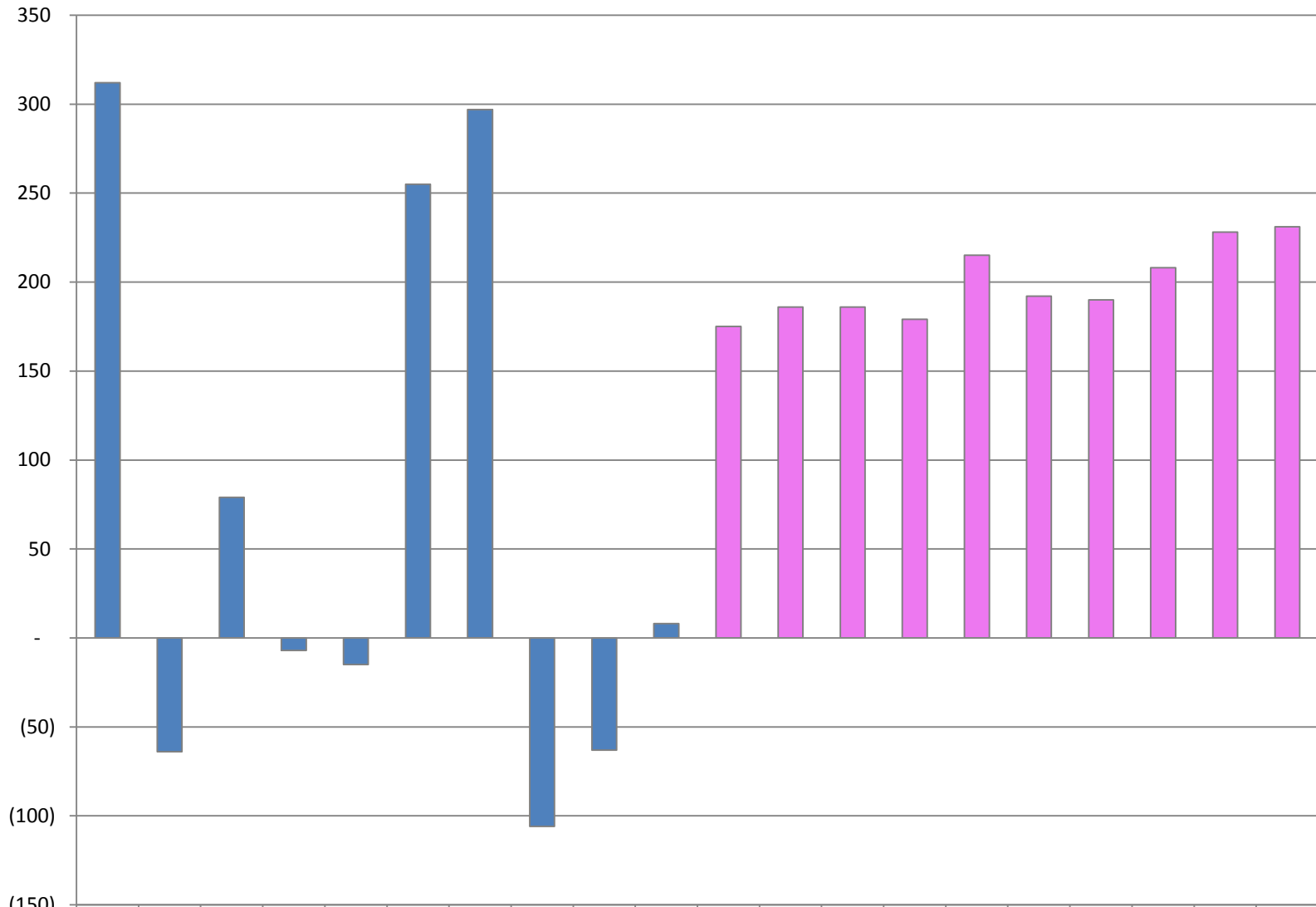
**Middletown City School District  
ENROLLMENT PROJECTIONS**

# 10-Year Average Grade Level Cohort Survival



**Middletown City School District  
ENROLLMENT PROJECTIONS**

**TOTAL ENROLLMENT CHANGE FROM PRIOR YEAR**



	1999-00	2000-01	2001-02	2002-03	2003-04	2004-05	2005-06	2006-07	2007-08	2008-09	2009-10	2010-11	2011-12	2012-13	2013-14	2014-15	2015-16	2016-17	2017-18	2018-19
Change From Prior Yr.	312	(64)	79	(7)	(15)	255	297	(106)	(63)	8	175	186	186	179	215	192	190	208	228	231

# ENROLLMENTS AND PROJECTIONS

(Projections based on Middletown Births and 3-year AVERAGE Cohort survival)

	BEDS FALL DATA				3 Yr. Avr. = 89.06	PROJECTED ENROLLMENTS									
	1	2	3	2009-10		2	3	4	5	6	7	8	9	10	
Birth Yr.	2006-07	2007-08	2008-09	2009-10	2010-11	2011-12	2012-13	2013-14	2014-15	2015-16	2016-17	2017-18	2018-19		
Orange County	4,936	5,040	5,133	5,206	5,165	5,444	5,338	5,338	5,338	5,338	5,338	5,338	5,338		
Middletown Mother's Address on Birth Cert.	510	579	676	777	768	772	804	804	804	804	804	804	804		
<b>K</b>	495	513	551	633	626	629	655	655	655	655	655	655	655		
Birth +5 yrs % K	97.06	88.60	81.51	81.51	81.51	81.51	81.51	81.51	81.51	81.51	81.51	81.51	81.51		
<b>1</b>	492 98.99	536 108.28	525 102.34	569 103.21	653 103.21	646 103.21	649 103.21	676 103.21	676 103.21	676 103.21	676 103.21	676 103.21	676 103.21		
<b>2</b>	535 103.68	510 103.66	536 100.00	538 102.45	583 102.45	669 102.45	662 102.45	665 102.45	693 102.45	693 102.45	693 102.45	693 102.45	693 102.45		
<b>3</b>	481 92.68	488 91.21	490 96.08	515 96.08	517 96.08	560 96.08	643 96.08	636 96.08	639 96.08	666 96.08	666 96.08	666 96.08	666 96.08		
<b>4</b>	513 99.42	484 100.62	478 97.95	487 99.33	512 99.33	514 99.33	556 99.33	639 99.33	632 99.33	635 99.33	662 99.33	662 99.33	662 99.33		
<b>5</b>	515 100.98	509 99.22	486 100.41	479 100.20	488 100.20	513 100.20	515 100.20	557 100.20	640 100.20	633 100.20	636 100.20	663 100.20	663 100.20		
<b>6</b>	487 99.59	528 102.52	539 105.89	499 102.67	492 102.67	501 102.67	527 102.67	529 102.67	572 102.67	657 102.67	650 102.67	653 102.67	681 102.67		
<b>7</b>	502 98.05	496 101.85	524 99.24	537 99.71	498 99.71	491 99.71	500 99.71	525 99.71	527 99.71	570 99.71	655 99.71	648 99.71	651 99.71		
<b>8</b>	530 100.19	512 101.99	487 98.19	525 100.12	527 98.15	489 98.15	482 98.15	491 98.15	515 98.15	517 98.15	559 98.15	643 98.15	636 98.15		
<b>9</b>	652 117.90	670 126.42	623 121.68	594 122.00	640 122.00	643 122.00	597 122.00	588 122.00	599 122.00	628 122.00	631 122.00	682 122.00	784 122.00		
<b>10</b>	572 101.78	521 79.91	537 80.15	544 87.28	518 87.28	559 87.28	561 87.28	521 87.28	513 87.28	523 87.28	548 87.28	551 87.28	595 87.28		
<b>11</b>	479 79.57	487 85.14	458 87.91	452 84.21	458 84.21	436 84.21	471 84.21	472 84.21	439 84.21	432 84.21	440 84.21	461 84.21	464 84.21		
<b>12</b>	461 80.88	397 82.88	425 87.27	383 83.68	378 83.68	383 83.68	365 83.68	394 83.68	395 83.68	367 83.68	361 83.68	368 83.68	386 83.68		
<b>K-2</b>	1,522	1,559	1,612	1,740	1,862	1,944	1,966	1,996	2,024	2,024	2,024	2,024	2,024		
<b>3-5</b>	1,509	1,481	1,454	1,481	1,517	1,587	1,714	1,832	1,911	1,934	1,964	1,991	1,991		
<b>K-5 Total</b>	3,031	3,040	3,066	3,221	3,379	3,531	3,680	3,828	3,935	3,958	3,988	4,015	4,015		
<b>6-8</b>	1,519	1,536	1,550	1,561	1,517	1,481	1,509	1,545	1,614	1,744	1,864	1,944	1,968		
<b>9-12</b>	2,164	2,075	2,043	1,973	1,994	2,021	1,994	1,975	1,946	1,950	1,980	2,062	2,229		
<b>TOTAL</b>	6,714	6,651	6,659	6,755	6,890	7,033	7,183	7,348	7,495	7,652	7,832	8,021	8,212		
Change From Prior Yr.	(106)	(63)	8	96	135	143	150	165	147	157	180	189	191		
TOTAL	6,714	6,651	6,659	6,755	6,890	7,033	7,183	7,348	7,495	7,652	7,832	8,021	8,212		

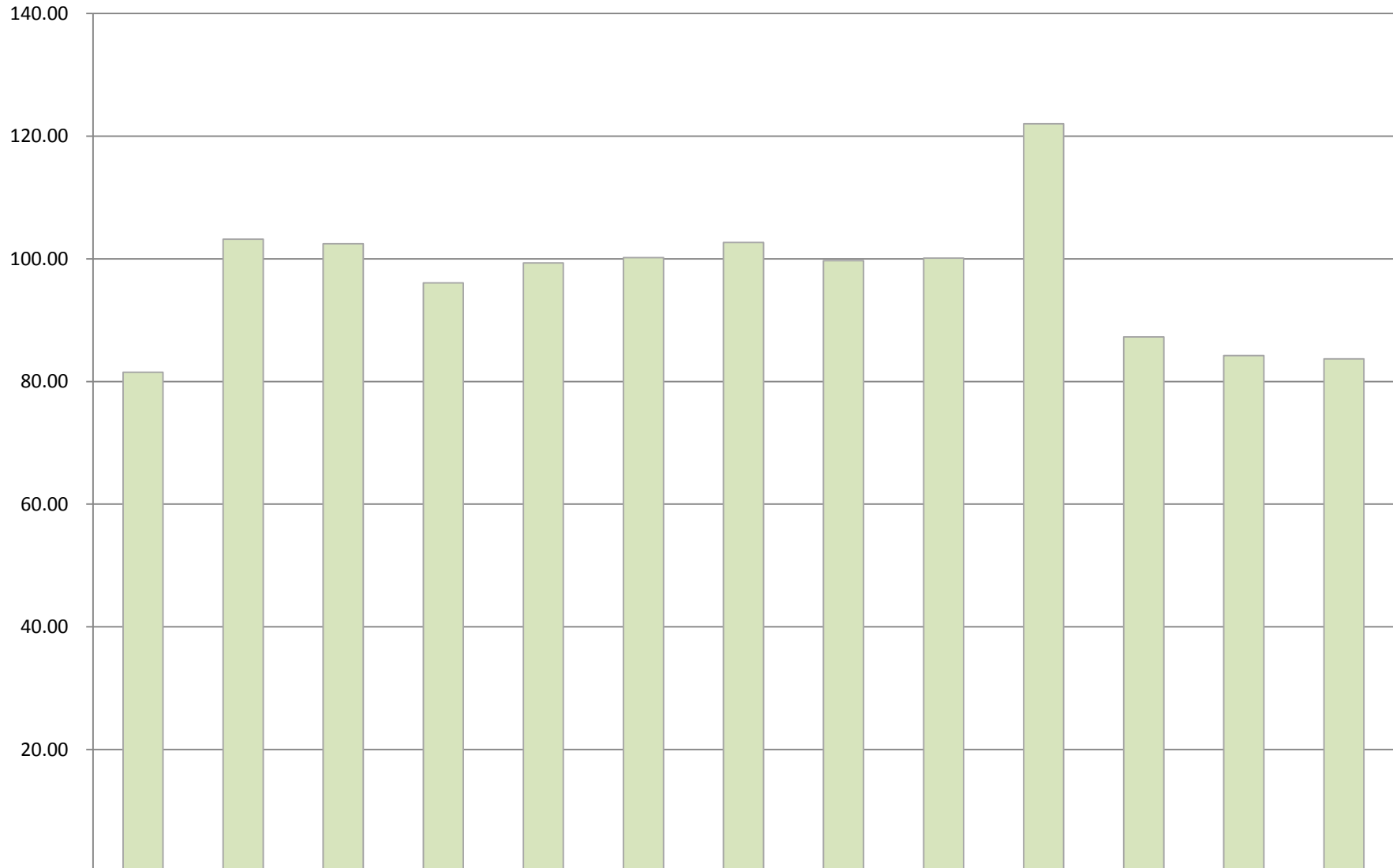
NOTES: Birth Statistics by County: [http://www.health.state.ny.us/nysdoh/vital\\_statistics/2000/table07.htm](http://www.health.state.ny.us/nysdoh/vital_statistics/2000/table07.htm)

Dark RED projections are based on actual live births.

## PROJECTED CLASS SIZE ROOMS NEEDED

				PROJECTED CHANGE IN ENROLLMENTS									
	1	2	3	Yr. Avr. = 89.0	2	3	4	5	6	7	8	9	10
	2006-07	2007-08	2008-09	2009-10	2010-11	2011-12	2012-13	2013-14	2014-15	2015-16	2016-17	2017-18	2018-19
<i>K-2 Pupil Change</i>	(10)	37	53	128	122	82	22	30	28	-	-	-	-
<b>18 Per Room</b>	<b>(1)</b>	<b>3</b>	<b>3</b>	<b>8</b>	<b>7</b>	<b>5</b>	<b>2</b>	<b>2</b>	<b>2</b>	<b>-</b>	<b>-</b>	<b>-</b>	<b>-</b>
<i>3-5 Pupil Change</i>	(6)	(28)	(27)	27	36	70	127	118	79	23	30	27	-
<b>25 Per Room</b>	<b>(1)</b>	<b>(2)</b>	<b>(2)</b>	<b>2</b>	<b>2</b>	<b>3</b>	<b>6</b>	<b>5</b>	<b>4</b>	<b>1</b>	<b>2</b>	<b>2</b>	<b>-</b>
<i>K-5 Pupil Change</i>	(16)	9	26	155	158	152	149	148	107	23	30	27	-
<b>K-5 Rooms</b>	<b>(2)</b>	<b>1</b>	<b>1</b>	<b>10</b>	<b>9</b>	<b>8</b>	<b>8</b>	<b>7</b>	<b>6</b>	<b>1</b>	<b>2</b>	<b>2</b>	<b>-</b>
<i>6-8 Pupil Change</i>	(75)	17	14	11	(44)	(36)	28	36	69	130	120	80	24
<b>25 Per Room</b>	<b>(3)</b>	<b>1</b>	<b>1</b>	<b>1</b>	<b>(2)</b>	<b>(2)</b>	<b>2</b>	<b>2</b>	<b>3</b>	<b>6</b>	<b>5</b>	<b>4</b>	<b>1</b>
<i>9-12 Pupil Change</i>	(15)	(89)	(32)	(70)	21	27	(27)	(19)	(29)	4	30	82	167
<b>25 Per Room</b>	<b>(1)</b>	<b>(4)</b>	<b>(2)</b>	<b>(3)</b>	<b>1</b>	<b>2</b>	<b>(2)</b>	<b>(1)</b>	<b>(2)</b>	<b>1</b>	<b>2</b>	<b>4</b>	<b>7</b>
<b>Combined Change</b>	<b>(106)</b> <small>(106)</small>	<b>(63)</b> <small>(63)</small>	<b>8</b> <small>8</small>	<b>96</b> <small>96</small>	<b>135</b> <small>135</small>	<b>143</b> <small>143</small>	<b>150</b> <small>150</small>	<b>165</b> <small>165</small>	<b>147</b> <small>147</small>	<b>157</b> <small>157</small>	<b>180</b> <small>180</small>	<b>189</b> <small>189</small>	<b>191</b> <small>191</small>
<b>Total Rooms</b>	<b>(6)</b>	<b>(2)</b>	<b>-</b>	<b>8</b>	<b>8</b>	<b>8</b>	<b>8</b>	<b>8</b>	<b>7</b>	<b>8</b>	<b>9</b>	<b>10</b>	<b>8</b>

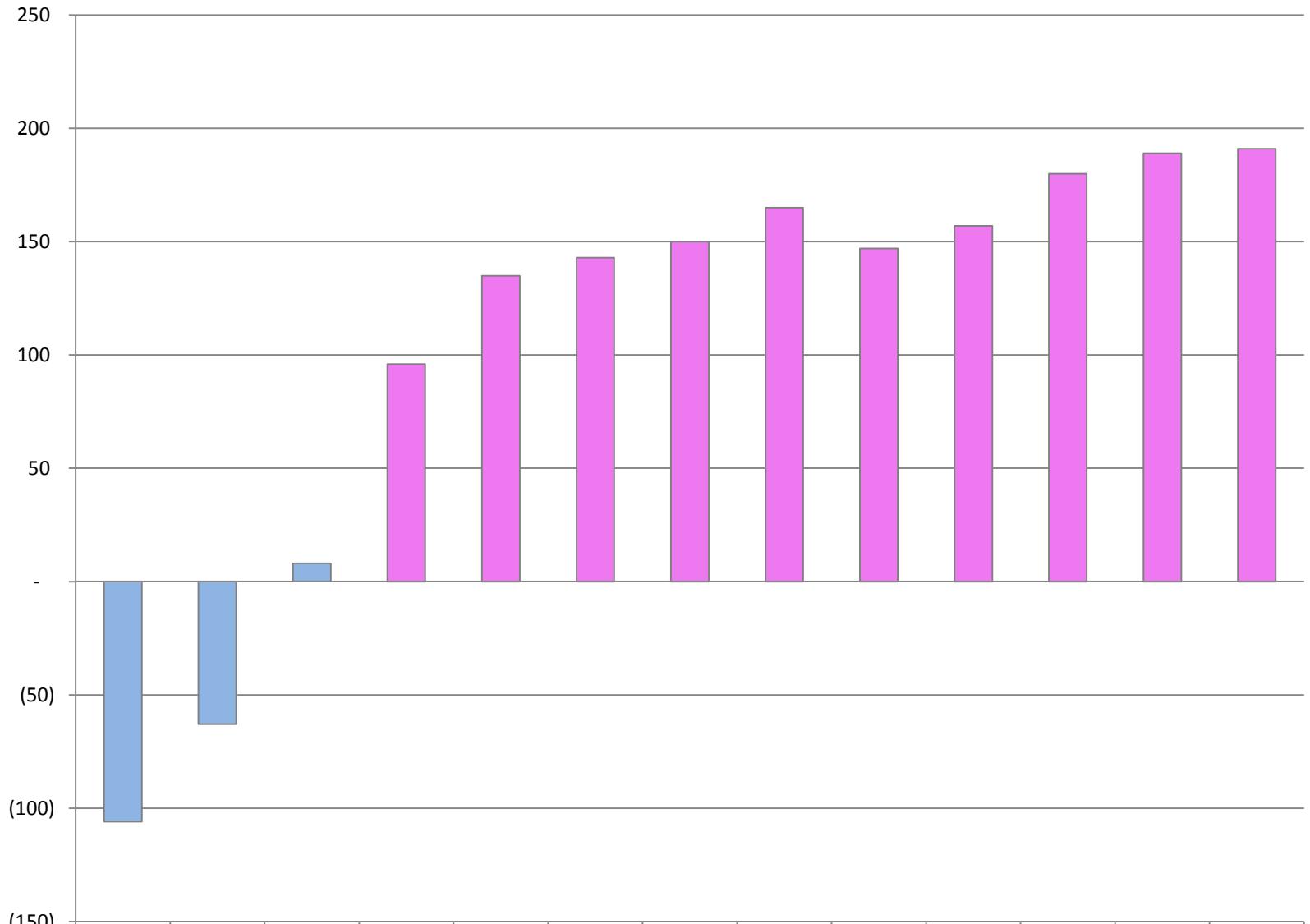
### 3-Year Average Grade Level Cohort Survival



	K	1	2	3	4	5	6	7	8	9	10	11	12
Cohort	81.51	103.21	102.45	96.08	99.33	100.20	102.67	99.71	100.12	122.00	87.28	84.21	83.68

**Middletown City School District  
ENROLLMENT PROJECTIONS**

**TOTAL ENROLLMENT CHANGE FROM PRIOR YEAR**

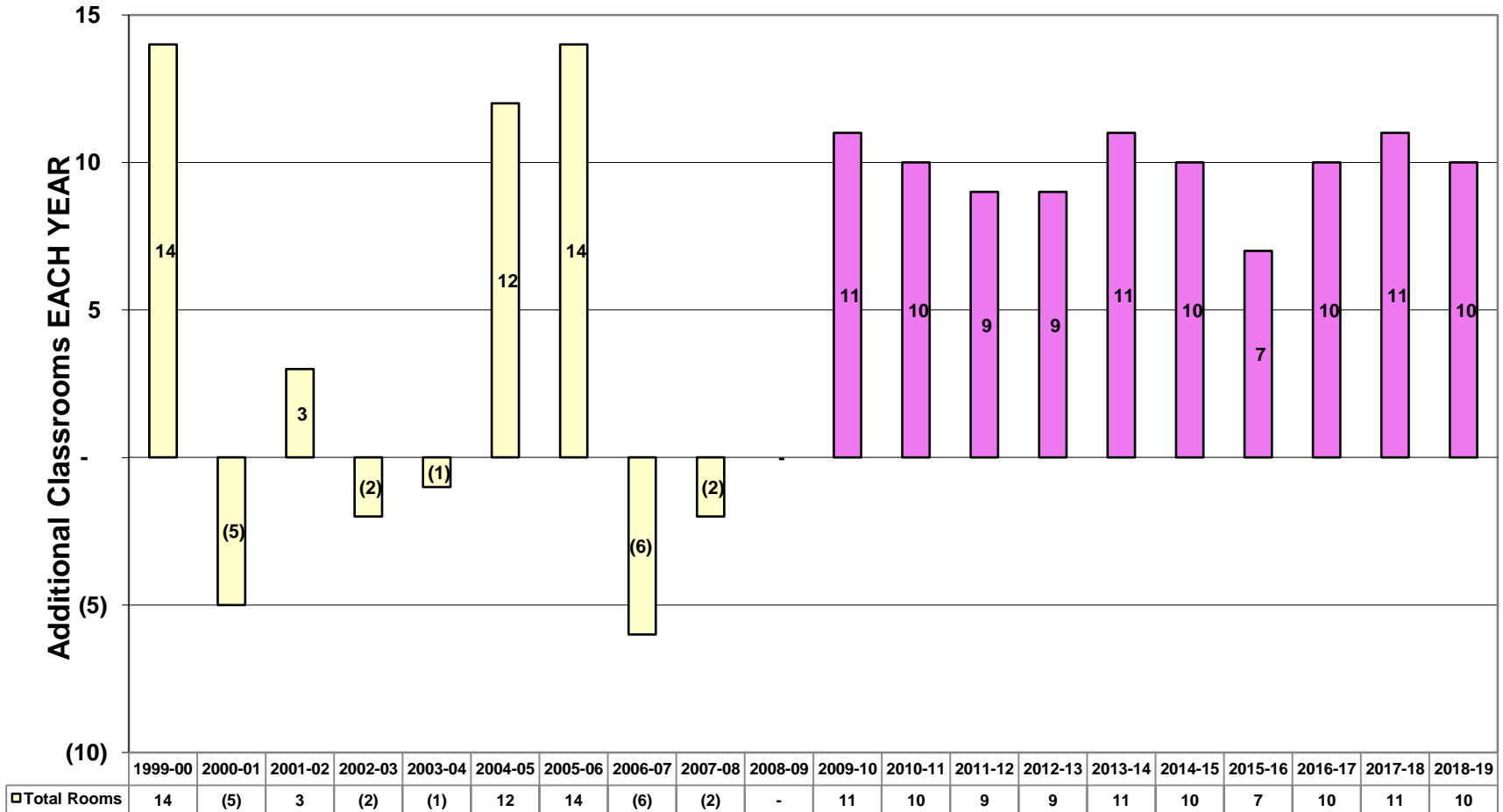


	2006-07	2007-08	2008-09	2009-10	2010-11	2011-12	2012-13	2013-14	2014-15	2015-16	2016-17	2017-18	2018-19
Change From Prior Yr.	(106)	(63)	8	96	135	143	150	165	147	157	180	189	191

Middletown City School District  
ENROLLMENT PROJECTIONS

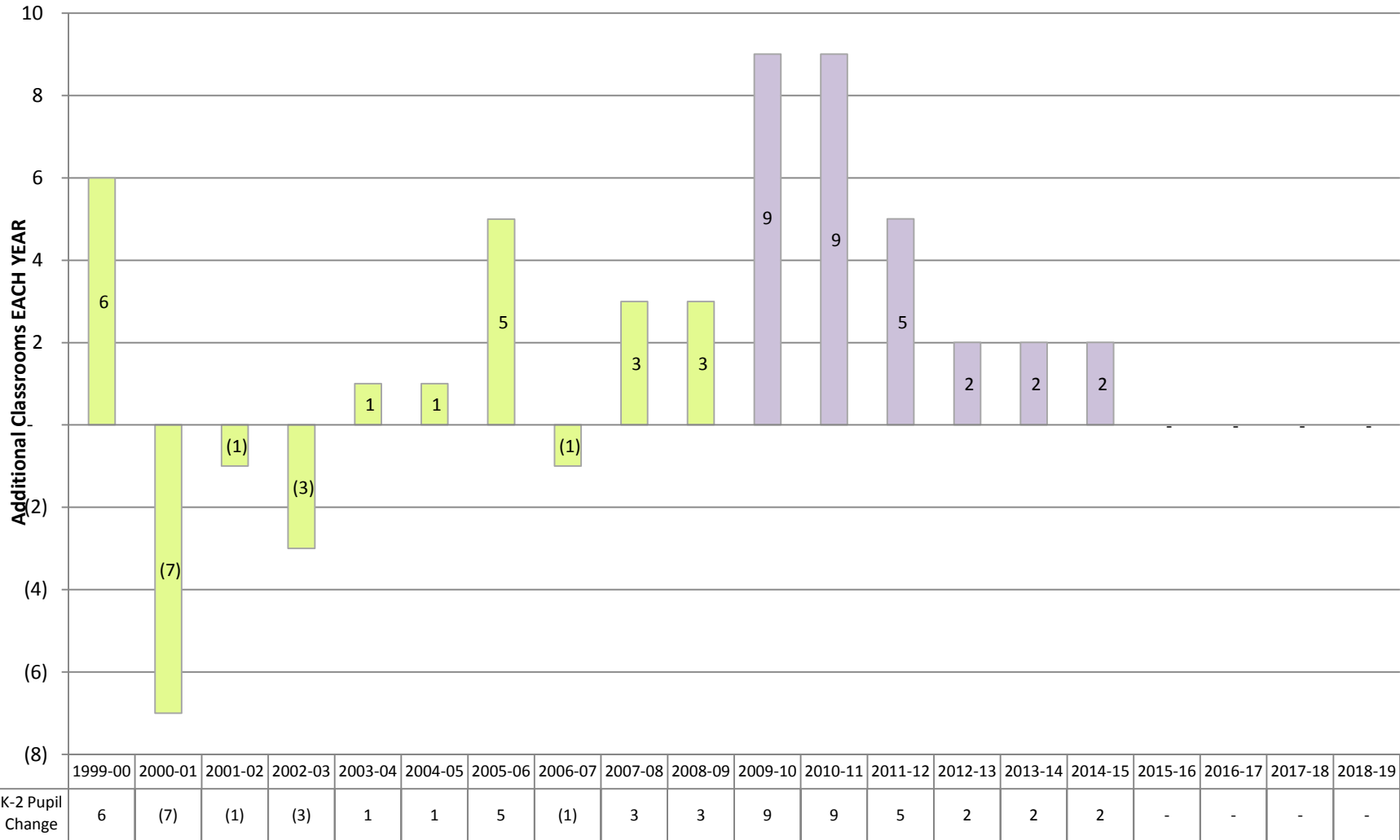
## ADDITIONAL CLASSROOMS EACH YEAR

(10-Year Average) (K-2 = 18 per Room, 3-12 = 25 per Room)



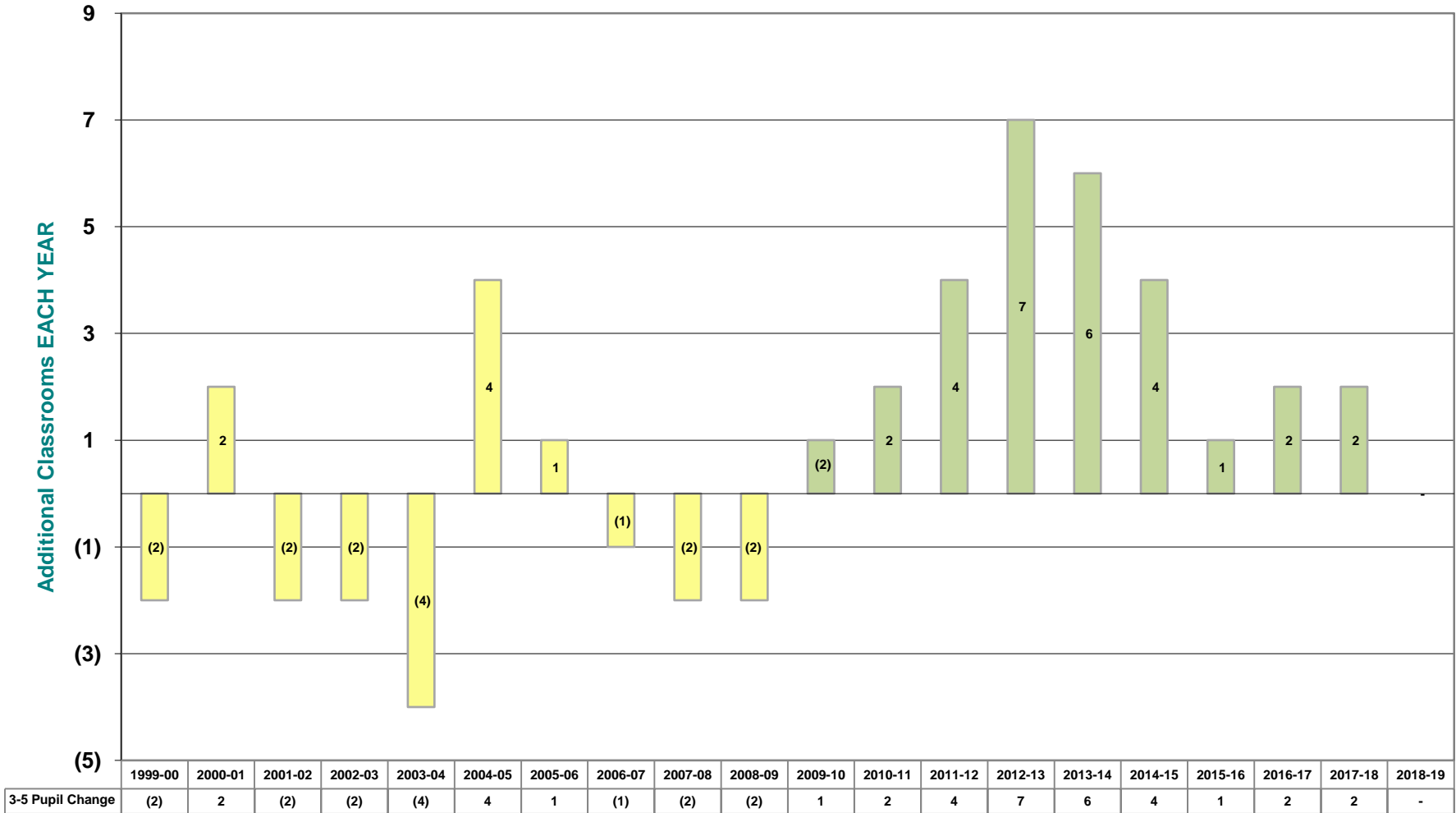
Middletown City School District  
ENROLLMENT PROJECTIONS

**ADDITIONAL K-2 (18-STUDENT) CLASSROOMS NEEDED EACH YEAR  
(10-Year Average)**



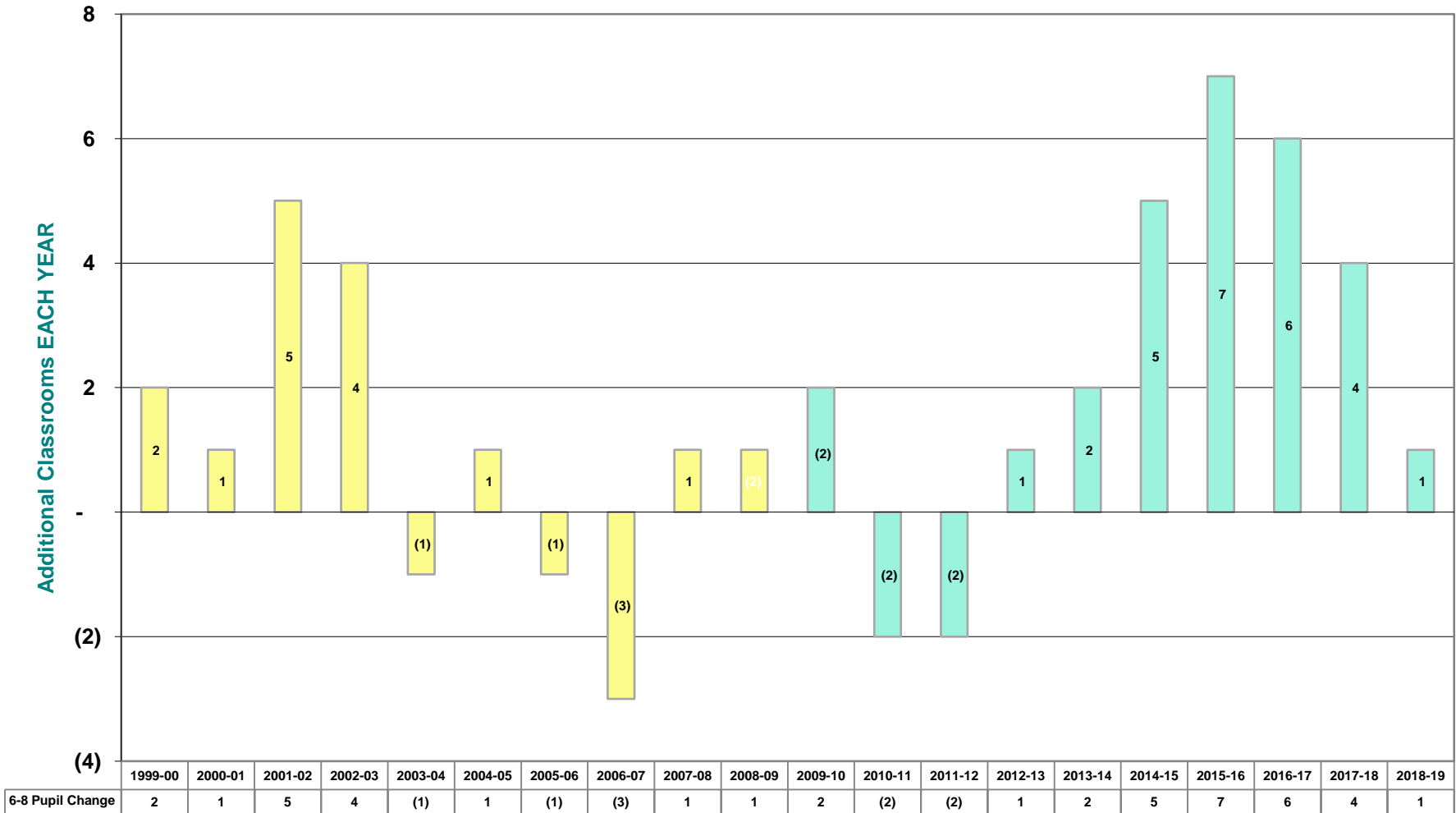
Middletown City School District  
ENROLLMENT PROJECTIONS

**ADDITIONAL 3-5 (25-STUDENT) CLASSROOMS NEEDED EACH YEAR  
(10-Year Average)**



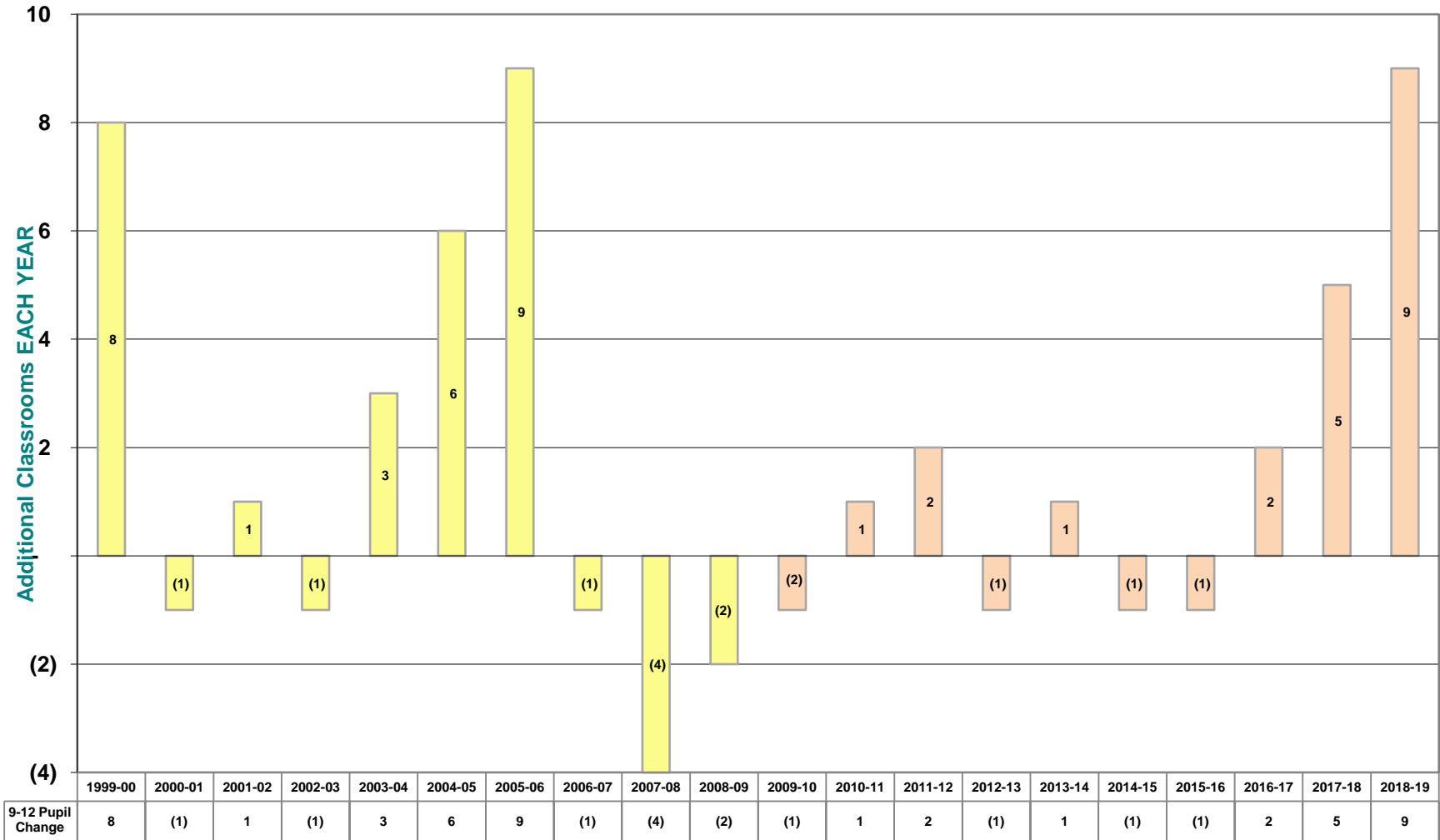
Middletown City School District  
ENROLLMENT PROJECTIONS

ADDITIONAL 6-8 (25-STUDENT) CLASSROOMS NEEDED EACH YEAR  
(10-Year Average)



Middletown City School District  
ENROLLMENT PROJECTIONS

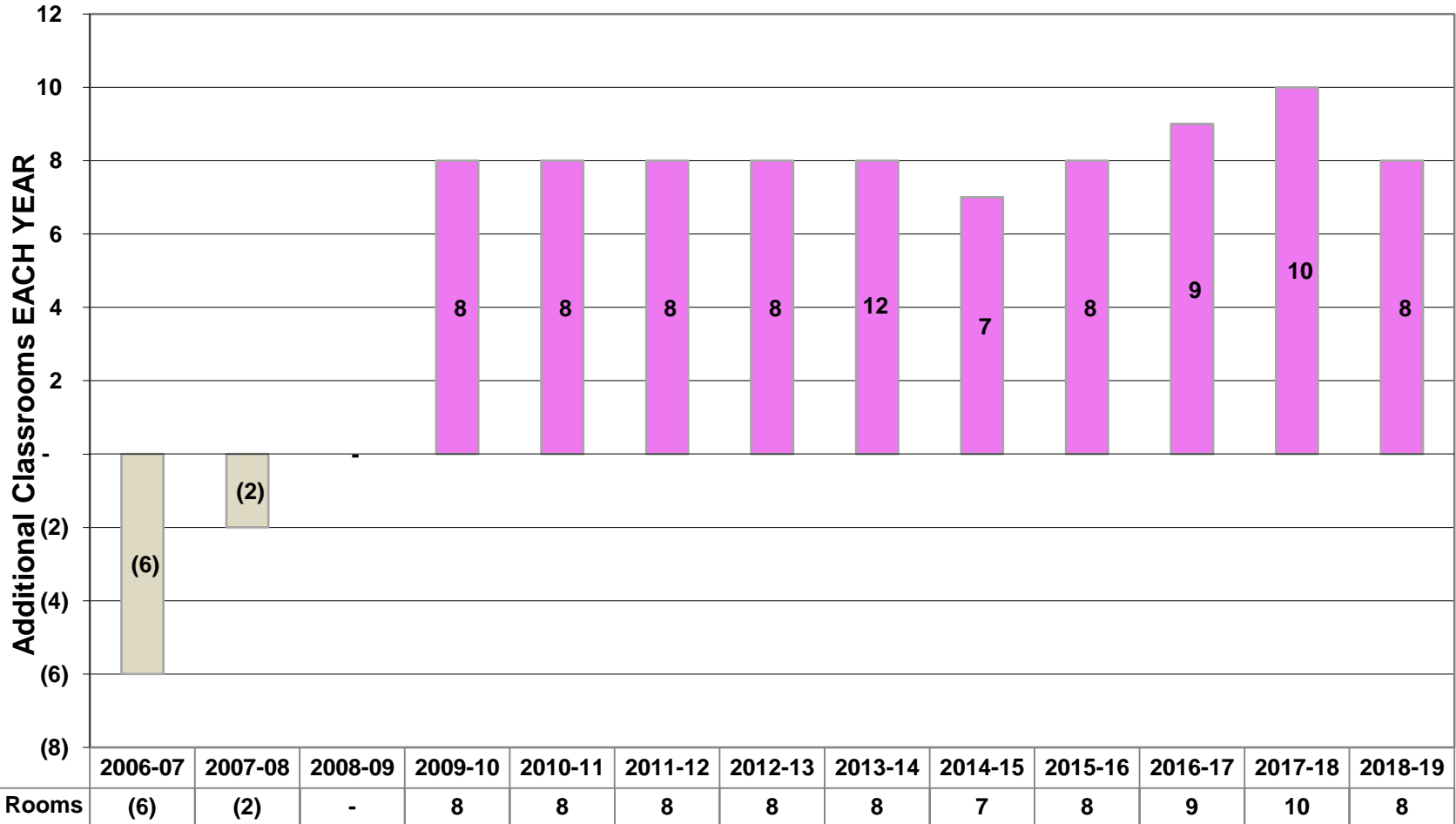
**ADDITIONAL 9-12 (25-STUDENT) CLASSROOMS NEEDED EACH YEAR  
(10-Year Average)**



Middletown City School District  
ENROLLMENT PROJECTIONS

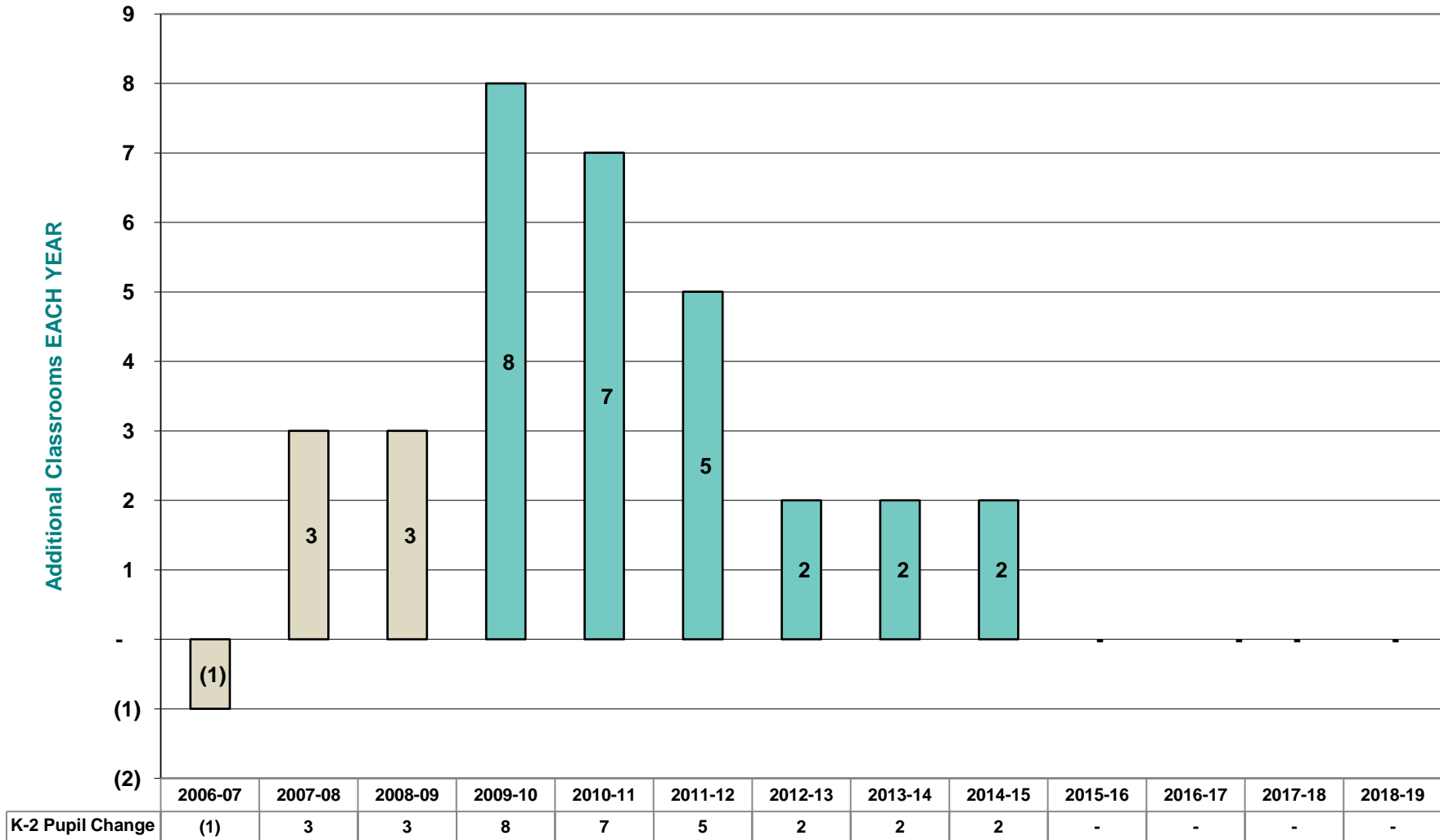
## TOTAL ADDITIONAL CLASSROOMS EACH YEAR

(Most Recent 3-Year Average) (K-2 = 18 per Room, 3-12 = 25 per Room)



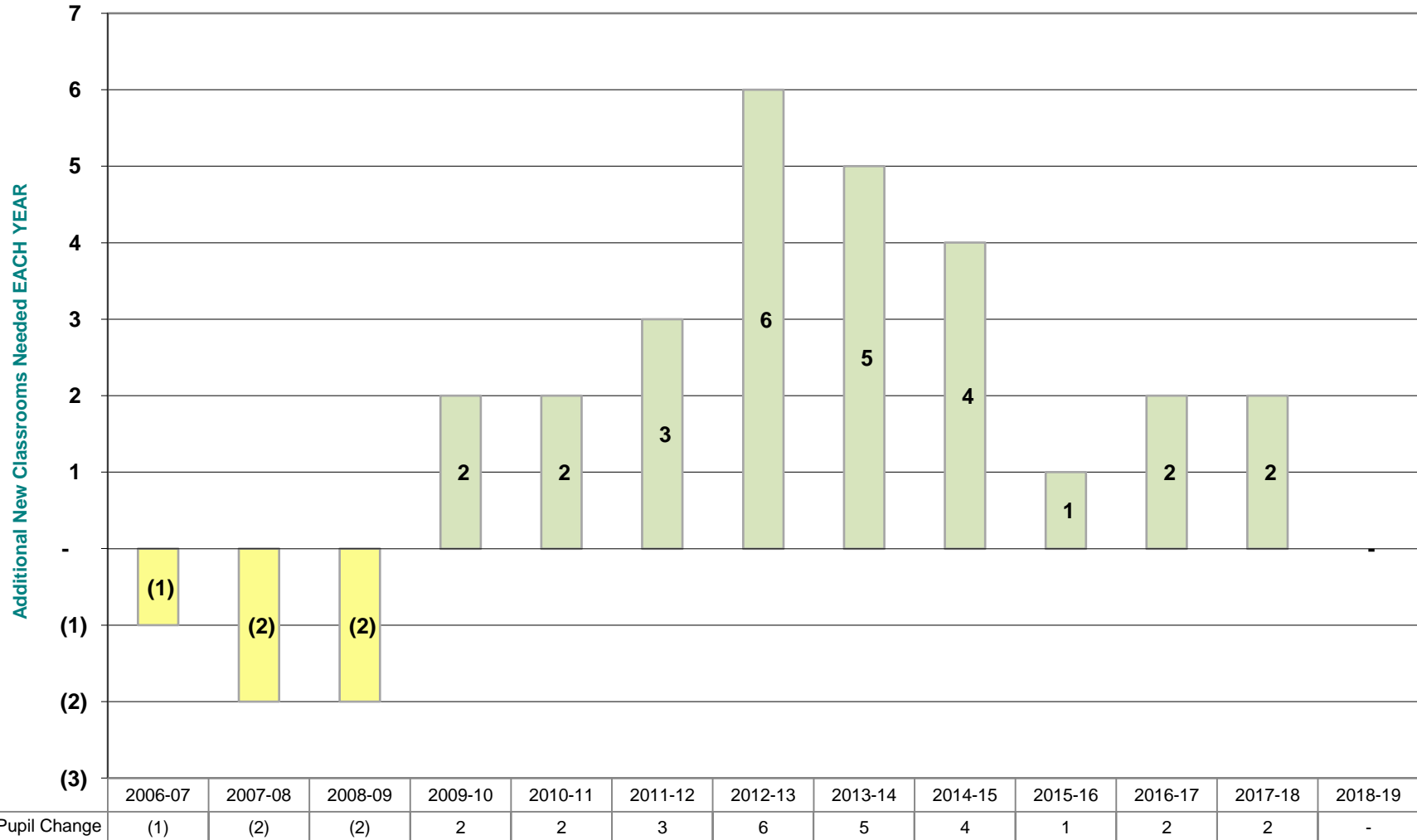
Middletown City School District  
ENROLLMENT PROJECTIONS

**ADDITIONAL K-2 (18-STUDENT) CLASSROOMS NEEDED EACH YEAR  
(Most Recent 3-Year Average)**



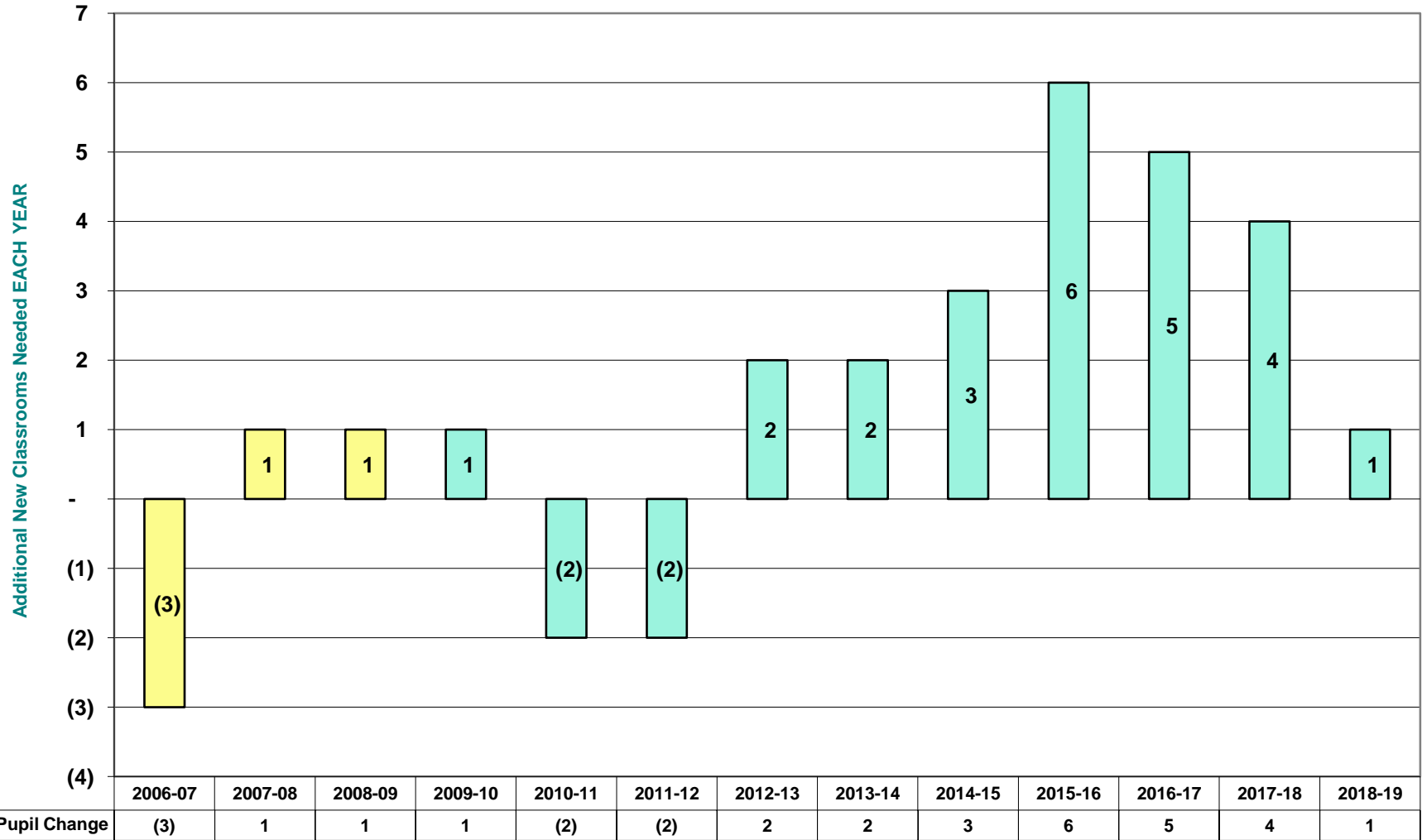
Middletown City School District  
ENROLLMENT PROJECTIONS

**ADDITIONAL 3-5 (25-STUDENT) CLASSROOMS NEEDED EACH YEAR  
(Most Recent 3-Year Average)**



Middletown City School District  
ENROLLMENT PROJECTIONS

**ADDITIONAL 6-8 (25-STUDENT) CLASSROOMS NEEDED EACH YEAR  
(Most Recent 3-Year Average)**



Middletown City School District  
ENROLLMENT PROJECTIONS

**ADDITIONAL 9-12 (25-STUDENT) CLASSROOMS NEEDED EACH YEAR  
(Most Recent 3-Year Average)**

